

Daily Weather Update

Coastal Area Around The Sri Lanka

Information Fusion Center-Colombo

Amplitude

130j-2019

100

50

0

100

50

0

100

50

0

100

50

0

100

50

0

100

50

0

100

50

0

100

50

0

100

50

0

100

50

0

100

50

0

100

50

0



Information Fusion Center
Colombo
Sri Lanka

Date 2026.06.13

FORMATION FUSION CENTRE

WEATHER FORECAST FOR SEA AREAS AROUND THE ISLAND DURING NEXT 24 HOURS

Issued at 05.30 a.m. on 13 Jun 2026



**DEPARTMENT OF METEOROLOGY
SRI LANKA**

COLOMBO - SRI LANKA

CONDITION OF THE RAIN

Showers or thundershowers will occur at several places in the sea areas off the coast extending from Mannar to Hambantota via Puttalam, Colombo and Galle.

WINDS

Winds will be south-westerly. Wind speed will be (30-40) kmph. Wind speed can increase up to (60-70) kmph at times in the sea areas off the coast extending from Kankasanthurai to Kalpitiya via Mannar.

Wind speed can increase up to (50-60) kmph at times in the sea areas off the coast extending from Trincomalee to Kankasanthurai via Mullaittivu and from Kalpitiya to Pottuvil Via Colombo, Galle and Hambantota.

STATE OF SEA

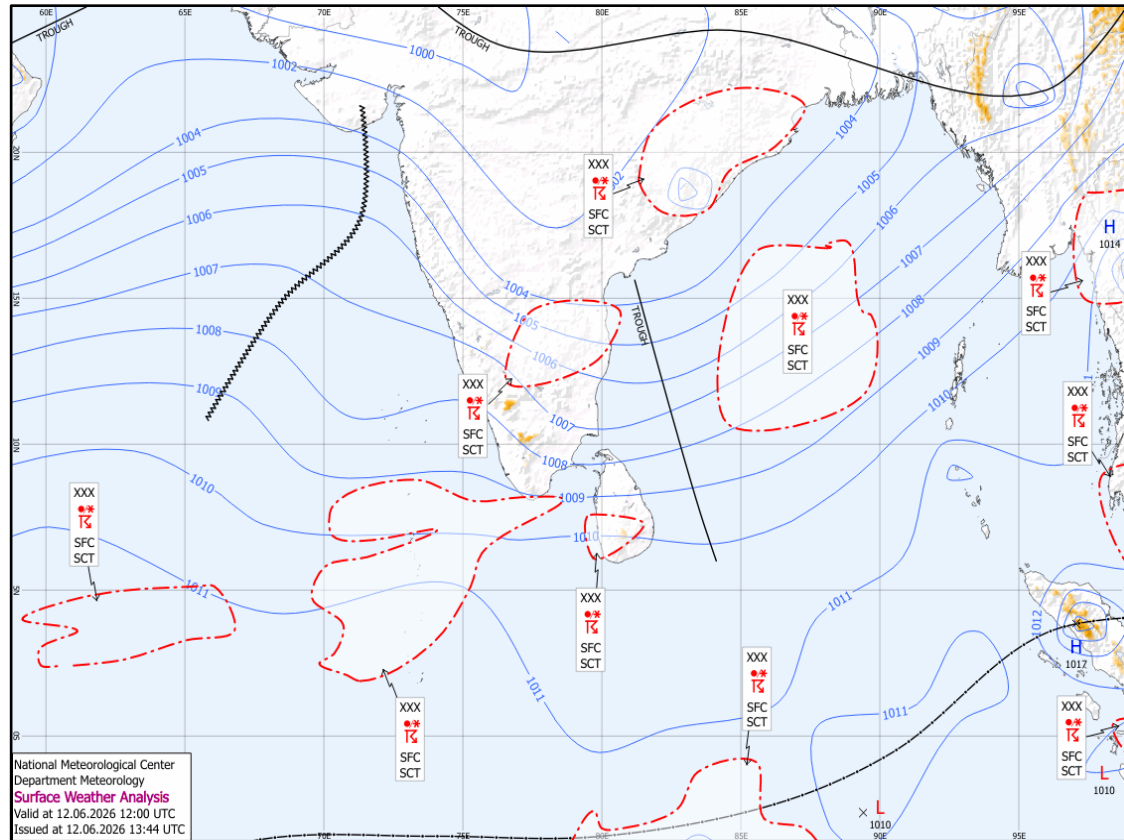
The sea areas off the coasts extending from Kankasanthurai to Kalpitiya via Mannar will be very rough at times. Naval and fishing communities are advised not to venture into these sea areas, until further notice.

The sea areas off the coasts extending from Trincomalee to Kankasanthurai via Mullaittivu and from Kalpitiya to Pottuvil Via Colombo, Galle and Hambantota will be rough at times. The other sea areas around the island will be fairly rough at times.

The wave height may increase about (2.0 – 2.5) meters in the sea areas off the coast extending from Mannar to Pottuvil via Colombo, Galle and Hambantota.

Temporarily strong gusty winds and very rough seas can be expected during thundershowers.

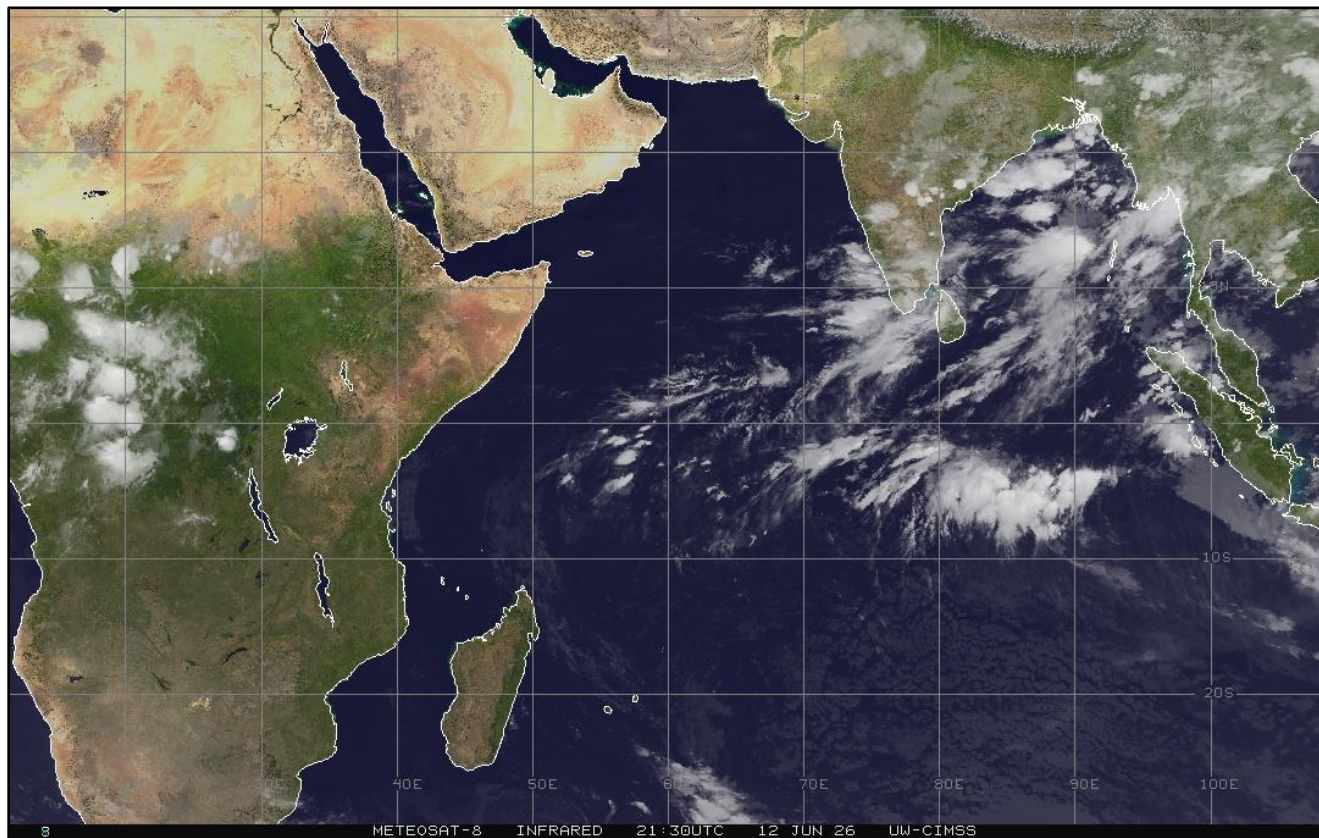
SURFACE ANALYSIS CHART



This analysis charts show the surface pressure pattern over Sri Lanka and the surrounding area. They display isobars (lines of equal pressure) and indicate areas of high (H) and low pressure (L) along with their central pressure value. Isobars are represented by solid blue lines, spaced every 1 hPa. High pressure is usually associated with mainly dry, settled weather with light winds, while low pressure is normally associated with unsettled weather, which is often wet and windy. The lower the pressure, generally the stronger the winds and the heavier the rain.

The map shows Coordinated Universal Time (UTC) and the local time is UTC+5.30.

SATELLITE IMAGE



13-Jun-26

IFC -Colombo



Information Fusion Center
Colombo
Sri Lanka

THANK YOU

The Officer Incharge
Information Fusion Centre - Colombo
Naval Headquarters, Colombo, Sri Lanka
+94 11 719 480 6
+94 74 120 4829
ifc@navy.lk
ifc.cbo@gmail.com